



CONTROL VALVES

M A N U F A C T U R E R

CONTROL VALVE MANUFACTURER

Spraytech Automation India Pvt Ltd is a manufacturer, supplier and exporter of premium quality of Industrial Control Valves. Spraytech is an esteemed name in Control Valves for isolation, control and flow reversal applications. Spraytech make globe control valves are hugely utilized in critical industrial applications like steam, utility, and process pipelines.

Today we are considered to be a leading supplier and exporter of a wide range of Ball valves (rotary actuated, segmented control valve), Butterfly valves (Double eccentric positioning), Globe control valves (2way, 3way, lined, jacketed, bellow seal) , Sanitary angle globe control valve (Food and Pharma), flush bottom valve (Manual, pneumatic Actuated, motorised, lined, jacketed).

We attribute our success to our motivated and skilled work force who can accomplish job orders of varying magnitudes and complexities. We are proud to have esteemed customers who have entrusted their faith in us over the years.

The aim of our organization is customer satisfaction which is achieved through following objectives :
Innovation, Commitment to quality, Technological solutions, On time delivery, After sales service. Our challenge is to meet the widely ranging delivery demands of an equally diverse customer base coupled with constant up gradation of production equipment and techniques to keep pace with new market trends and applications.

■ **GLOBE 2 WAY CONTROL VALVE**

■ **GLOBE 3 WAY CONTROL VALVE**

■ **BUTTERFLY CONTROL VALVE**

■ **MICROFLOW CONTROL VALVE**

■ **V-NOTCH BALL CONTROL VALVE**

■ **BALL VALVE ON-OFF / CONTROL**

■ **PID SANITARY GLOBE CONTROL VALVE**

■ **FLUSH BOTTOM VALVE**



Chemical



Fertilizer



Power



Oil & Gas



Water Treatment



Pharma



Paper & Pulp



Steel



Cement

Innovation

Innovation is the introduction of new ideas, methods, or things.
We must promote originality and encourage innovation.

Quality

Improving products, services, systems and processes, to
making sure that the whole organisation is fit and effective.

**Prompt
Services**

We are pleased to introducing ourselves as a professionally
managed after sales, service provider company.

GLOBE 2 WAY CONTROL VALVE

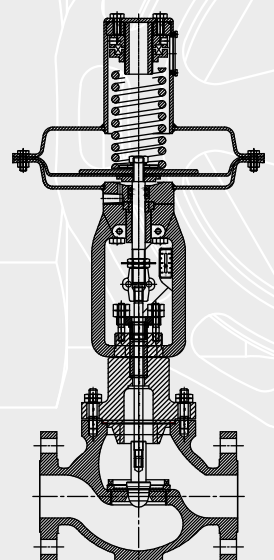
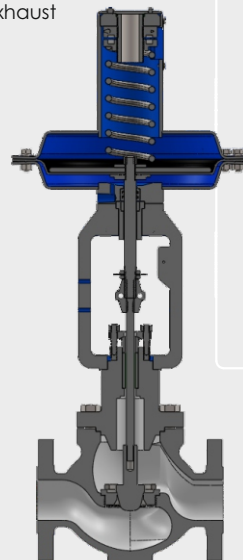
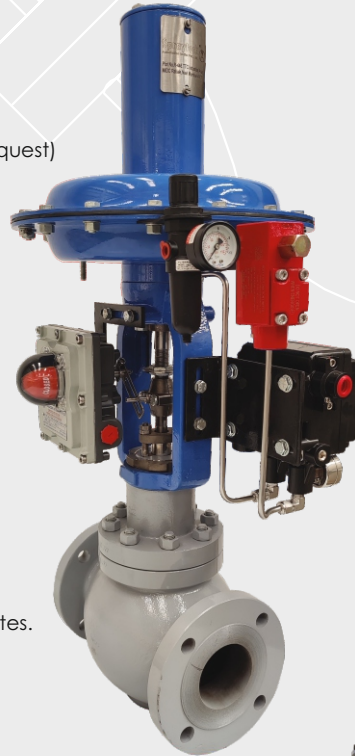
DESIGN :	ASME B16.34.
VALVE SIZE :	1/2" to 12" (15 to 300mm)
RATING :	150# to 2500# ANSI.(Other Rating Available On Request)
END CONNECTION :	Flanged, Screwed, Buttweld, Socketweld.
MATERIAL :	Carbon steel, Stainless Steel, Alloy Steel, PP, Teflon lined etc.(Other Material Available On Request)
BONNET :	Standard, Extended Finned Bonnet, Bellow Sealed.
TRIM FORMS :	Top guided Contoured, Micro flow needle. V-Ported (Balanced/Unbalanced), Low Noise Trim.
TRIM MATERIAL :	Stainless Steel, Alloy Steel, Stellite. (Other Material Available On Request)
FLOW CHAR. :	Equal Percentage, Linear and On/Off.
SEAT LEAKAGE :	Class III, IV, V, & VI (FCI-70.2) Standard Leakage Rates. Metal to Metal Seating Class IV-less than 0.01% of rated Cv. Metal to soft Seating Class VI-Bubble tight (Zero Leakage).
GLAND PACKING :	Grafoil or PTFE, Double Gland,(As Per Temperature).
ACTUATOR :	Pneumatic Diaphragm, Pneumatic Piston or Electrical.
ACCESSORIES :	Pneumatic Positioner, Electro Pneumatic Positioner, Limit Switch, SOV, Volume Booster, AFR, Position Transmitter, Air lock relay, IP Converter.

DESIGN AND FEATURES

- High flow capacity and rangeability.
- Top opening for easy trim inspection without disturbing insulation or piping connections.
- Positive guiding for correct trim alignment under all operating conditions.
- Bellow seals available for positive stem sealing.
- Wide selection of actuators to meet most system requirements.
- Accessories mounting -verity of access like valve positioner, Solenoid valve, Air filter regulator, Volume booster, Limit switch, position feedback transmitter, Quick exhaust valves, IP convertor etc. can be mounted easily.

QUALITY AND PERFORMANCE GUARANTEE

- Material certification available for all major component parts.
- Full guarantee on design and performance.
- All testing performance to the requirements of ASME B16.34.
- Tight closing for reliable control even when change in pressure / temperature are sudden and extreme.
- Comprehensively designed and tested to ensure its optimum performance for the tough process parameters specified.



GLOBE 3 WAY CONTROL VALVE

DESIGN :	ASME B16.34.
VALVE SIZE :	1/2" to 12" (15 to 300mm)
BODY FORM :	Globe 3 Way Port With Tail Piece.
RATING :	150# to 2500# ANSI (Other Rating Available On Request)
MATERIAL :	Carbon steel, Stainless Steel, Alloy Steel, Teflon lined etc. (Other Material Available On Request)
BONNET :	Standard, Extended Finned, Bellow Sealed.
TRIM FORMS :	Skirt guided, Trim with soft seated, Multihole plug trims.
FLOW :	Mixing And Diverting.
FLOW CHARA. :	Liner, On/Off
SEAT LEAKAGE :	Class III, IV, V, & VI (FCI-70.2) Standard Leakage Rates. Metal to Metal Seating Class IV-less than 0.01% of rated Cv. Metal to soft Seating Class VI-Bubble tight (Zero Leakage).
GLAND PACKING :	Grafoil or PTFE (As per Temperature)
ACTUATOR :	Pneumatic Diaphragm, Piston or Electrical.
ACCESSORIES :	Pneumatic Positioner, Electro Pneumatic Positioner, Limit Switch, SOV, Air lock relay, Volume Booster, AFR, Position Transmitter.

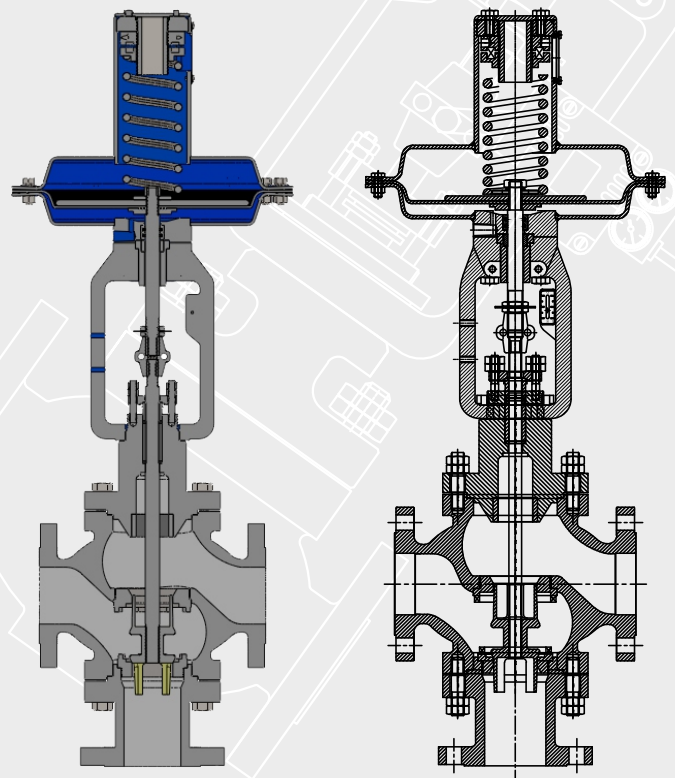


DESIGN AND FEATURES

- High Flow capacity and rangeability.
- Heavy Duty top guide with additional skirt guiding on the plug.
- Heavy Duty ground and polished stem.
- Wide range of interchangeable trim sizes.
- Bellow seal available for positive stem sealing.
- Comprehensively design and tested to ensure its optimum performance for the tough process parameters specified.
- Wide selection of actuators to meet most system requirements.
- All testing performance to the requirements of ASME 16.34

QUALITY AND PERFORMANCE GUARANTEE

- Material certification available for all major component parts.
- Full guarantee on design and performance.
- All testing performance to the requirements of ASME B16.34
- Tight closing for reliable control even when change in pressure / temperature are sudden and extreme.
- Comprehensively designed and tested to ensure its optimum performance for the tough process parameters specified.



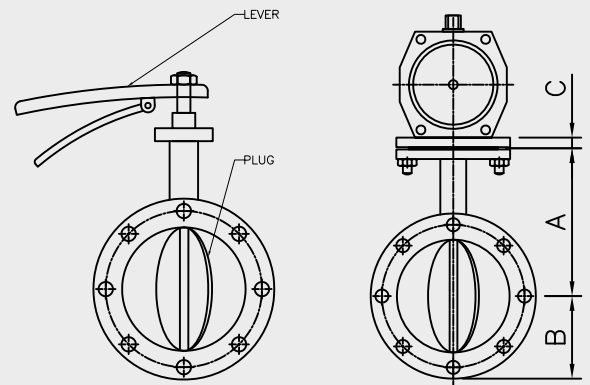
BUTTERFLY CONTROL VALVE

DESIGN :	Wafer, Flanged (BS:5155)
VALVE SIZE :	50 to 600mm (2" to 24")
BODY TYPE :	Double Offset, Centric.
RATING :	PN 10, PN 16, ASA 150 (Other On Request)
MATERIAL	
BODY	Carbon Steel, Stainless Steel, Teflon Lined etc.
VANE	Stainless Steel (Other On Request)
FLOW CHAR. :	On-Off / Throtting.
SEAT LEAKAGE :	VI (FCI-70.20).
GLAND PACKING :	PTFE V Ring, Grafoil (As Per Temperature).
ACTUATOR :	Diaphragm, Rotary & Electrical Actuator.
ACCESSORIES :	AFR, SOV, MOR, Gear Box, Limit switch & Position indicator.



DESIGN AND FEATURES

- Compact design, Low cost and maintenance free.
- Very high Cv to size ratio.
- Reliable smooth operation with assured product quality.
- Bubble tight shut off (Leakage Class-VI)
- Flow characteristic - throttling for modulating duty.
- Suitable for mount between ANSI/BS/DIN/Flanges.



MICROFLOW CONTROL VALVE

DESIGN :	ASME B16.34
SIZE :	1/4" To 2"
RATING :	150#
END CONNECTION :	Flanged, SW, BW, Threaded (BSPT / NPT), TC End.
MATERIAL :	SS304, SS316, SS316L, SS304L (Other Material On Request)
CHARACTERISTICS :	Linear
HANDWHEEL :	Side / Top.
ACTUATOR :	Pneumatic Diaphragm, Single Spring.
ACCESSORIES :	AFR, SOV, Positioner (Electro Pneumatic, Pneumatic)



V-NOTCH BALL CONTROL VALVE

DESIGN :	BS : 5351
VALVE SIZE :	25 to 300 mm (1" to 12")
RATING :	150# ANSI (Other Rating Available On Request)
BODY TYPE :	V-Notch / Full bore conventional.
MATERIAL	
BODY	Carbon Steel, Stainless Steel etc. (Other Rating Available On Request)
BALL	Stainless Steel, Alloy Steel.
SEAT	Teflon, Viton, Metal, GFT, CFT.
FLOW CHAR. :	Throttling / On-Off.
ACTUATOR :	Pneumatic Diaphragm, Rotary Rack & Pinion Single & Double Acting, Motorized.
ACCESSORIES :	Electro pneumatic positioner, AFR, SOV, MOR, Gear Box, Limit switch & Position indicator.



DESIGN AND FEATURES

- Full bore straight through construction turbulence free flow with wide rangeability.
- Tight shut off leakage class VI.
- Suitable for control action with carefully contoured V-notch resulting in a nearly equal % characteristic.
- Ball machined to fine finish hard-chrome plated and mirror polished to increase ball seal life.
- Preventing dust & dirt out of the working mechanism.
- Reliable operation and ideal for abrasive slurries or solids.

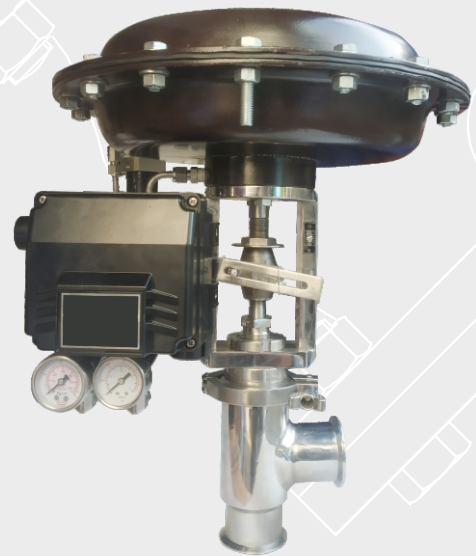
BALL VALVE ON-OFF / CONTROL

DESIGN :	ASME B16.34, API 6D, BS EN17292, ANSI B16.34, BS 5351
SIZE :	1/2" To 10"
RATING :	150# To 1500# (Other Rating Available On Request)
END CONNECTION :	Flanged end, Socket weld, Butt weld, Screwed end (NPT, BSP, BSPT), Tri-Clover, OD Base.
MATERIAL :	Carbon Steel, Stainless Steel (Other Material Available On Request)
SEAT :	Soft / Metal.
ACTUATOR :	Rack & Pinion Single & Double Acting, Motorized.
HANDWHEEL :	Side / Top.
ACCESSORIES :	AFR, SOV, MOR, Gear Box, Limit switch & Position indicator.



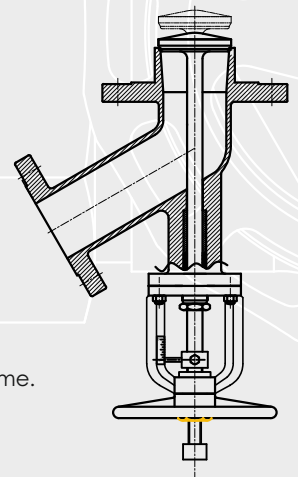
PID SANITARY GLOBE CONTROL VALVE

DESIGN	IEC 60534
SIZE	1/2" To 4"
RATING	150#
END CONNECTION	Tri clamp, SMS Coupling. (Other Available On Request)
MATERIAL	SS304, SS316, SS304L, SS316L.
CHARACTERISTICS	Equal Percentage, Linear.
ACTUATOR	Pneumatic Diaphragm, Piston type, Motorized.
ACCESSORIES	AFR, SOV, Positioner (Electro Pneumatic, Pneumatic), Air Booster, Limit Switch.
APPLICATION	Food Industries, Breweries, Dairy.



FLUSH BOTTOM VALVE

DESIGN :	ANSI B16.5 (Other On Request)
SIZE :	2" To 10"
RATING :	150# (Other Rating Available On Request)
END CONNECTION :	Flanged, Tri clover end.
MATERIAL :	Stainless steel, Alloy Steel. (Other Material On Request) PTFE Lined, Jacketed.
SEAT :	Soft (PTFE - RPTFE) / Metal (Stellite).
GLAND PACKING :	PTFE V Ring, Grafoil (As Per Temperature).
ANGLE :	45° & 60°
HAND WHEEL :	Side / Top.
ACTUATOR :	Pneumatic Diaphragm, Single & Double acting, Motorised, Electrical, Manual.
ACCESSORIES :	AFR, RTD (Temperature Sensor), Limit Switch, SOV, Positioner (Electro Pneumatic, Pneumatic), Booster.



DESIGN AND FEATURES

- High flow capacity.
- Best suited for drainage system.
- Tight closing for reliable shut - off even after change in pressure / temperature are sudden and extreme.
- Wide selection of actuators to meet most system requirements.



OUR BRANCHES

Regd. Office (Mumbai) :

Spraytech House, Plot No.: A-132, Road No. 23, Spraytech Circle,
Wagle Indl. Estate, Thane (W) - 400 604. Mumbai Maharashtra, (India)
Tel. : 91-022-2582 8929 / 2735 / 2736
E-mail :- sales@spraytechindia.com
sales1@spraytechindia.com

Rabale (Navi Mumbai) :

Spraytech Automation India Pvt. Ltd., Plot No.: R-446, T.T.C. Industrial
Area, MIDC Rabale, Navi Mumbai - 400 701.
E-mail :- flowtechnology1@spraytechindia.com

Rabale (Navi Mumbai) :

Spraytech Systems India Pvt. Ltd., Plot No.: R-513, MIDC, TTC Industrial
Area, Rabale, Navi Mumbai - 400 701.
E-mail :- flowtechnology@spraytechindia.com

Branch Office (Pune) :

White House, Survey no. 161, Near
Bhosale Garden Hadapsar, Pune - 411028

Indapur Plant (Pune) :

Spraytech Systems India Pvt. Ltd., Plot No.: A-5, Indapur Five Star
Industrial Area, Village - Loni Devkar Balpudi, Tal. - Indapur,
Dist. - Pune - 413132



Visit Website