

# SPRAYTECH COMPANY PROFILE

**CONTROL VALVES | STRAINERS FILTERS | FORGE FITTINGS**

Spraytech Automation India Pvt Ltd is a manufacturer, supplier and exporter of premium quality of Industrial Control Valves. Spraytech is an esteemed name in Control Valves for isolation, control and flow reversal applications. Spraytech make globe control valves are hugely utilized in critical industrial applications like steam, utility, and process pipelines.



Today we are considered to be a leading supplier and exporter of a wide range of Ball valves (rotary actuated, segmented control valve), Butterfly valves (Double eccentric positioning), Globe control valves (2way, 3way, lined, jacketed, bellow seal), Sanitary angle globe control valve (Food and Pharma), flush bottom valve (Manual, pneumatic Actuated, motorised, lined, jacketed).

We attribute our success to our motivated and skilled work force who can accomplish job orders of varying magnitudes and complexities. We are proud to have esteemed customers who have entrusted their faith in us over the years.

The aim of our organization is customer satisfaction which is achieved through following objectives : Innovation, Commitment to quality, Technological solutions, On time delivery, After sales service. Our challenge is to meet the widely ranging delivery demands of an equally diverse customer base coupled with constant up gradation of production equipment and techniques to keep pace with new market trends and applications.

## VALUE

Our values define who we are as an organisation and what makes us distinctive. We believe in acting with courageous integrity.

## VISION

We are putting all our efforts to improve efficiency of our products with effective cost cutting. We are all committed to on time delivery international quality products, after sales service and product technical support.

## MISSION

We provide hygienic working environment with all necessary facilities for better working environment. We encourage to safety measures to avoid troubles to workers and processes. Our customer is our first priority.

## SPRAYTECH AUTOMATION INDIA PVT. LTD.

Manufacturing Control Valves, Strainers Filters, Forge Fittings.

Metallurgical Industry

Air Pollution Control

Chemical Industry

Automotive / Sheet Metal Industry

Pharmaceutical Industry

Paper Industry

Food and Beverages Industries

Fire Suppression for Tanks

# CONTROL VALVES

## ENERGY CONSERVATION FLOW MEASUREMENT AND CONTROL ELEMENTS



## OUR RANGE OF PRODUCTS INCLUDES :

- ✓ Globe Control Valve
- ✓ 2 Way / 3 Way Globe Control Valve
- ✓ Flush Bottom Valve
- ✓ Micro Flow Valve
- ✓ PID Sanitary Globe Control Valve
- ✓ V-Notch Ball Valve
- ✓ Butterfly Control Valve
- ✓ Ball Valve On-Off Control



# STRAINERS FILTERS

WE ARE MANUFACTURERS DIFFERENT TYPES OF STRAINERS AND FILTERS



## OUR RANGE OF PRODUCTS INCLUDES :

- ✓ Duplex Basket Filters / Strainers
- ✓ Simplex Basket Filters / Strainers
- ✓ Self Cleaning Filters
- ✓ Bag Filter Housing
- ✓ Y Type, T Type & Conical Strainers
- ✓ Hydraulic And Lube Oil Filter Elements
- ✓ Oil Filter
- ✓ Sand Filters
- ✓ Gas & Compressed Air Filter Elements

# FORGE FITTINGS

WE ARE MANUFACTURERS DIFFERENT TYPES OF FORGE FITTINGS



## OUR RANGE OF PRODUCTS INCLUDES :

- ✓ Union
- ✓ Union elbow
- ✓ Reducing union
- ✓ OD cap and plug
- ✓ Bored-through fittings
- ✓ Bulkhead union
- ✓ union tee and cross
- ✓ valve manifolds
- ✓ Reducer
- ✓ Heat exchanger tee
- ✓ Male connector
- ✓ Female connector
- ✓ Male bulkhead connector
- ✓ Port connector
- ✓ Check valves
- ✓ Male / Female elbow
- ✓ Male / Female branch tee
- ✓ Positionable Male elbow
- ✓ Chromatograph Fittings
- ✓ Needle valves



# THANE OFFICE & FACTORY



## PRODUCTION EQUIPMENTS

CNC lathe	4	Polish machine	2
CNC turn-mill(5-axis)	1	Drilling machine	2
CNC mill-turn(9-axis)	1	Welding machine	4
VMC milling(5-axis)	1	Laser marking	1
Lathe machine	5	Cutting machine	1
Milling machine	6		



# RABALE FACTORY



## PRODUCTION EQUIPMENTS

CNC Lathe	4	Punching machine	1
Sliding head stock lathe	4	Air compressor	4
VMC milling	1	Vane cleaning machine	1
Turn mill	2	Bench vice	1
Lathe machine	4	Tool & cutter machine	1
Milling machine	5	Drying oven	1
Drilling machine	5	Bending machine	1
Welding machine	3	Flat spray machine	1
Bench grinder	2	Polish machine	1
Draft grinder	1	Rolling machine	1
Cutting machine	2	Lazer marking	2
Crimping machine	1	Plastic moulding machine	1
Pressing machine	2		



# RABALE FACTORY



# INDAPUR FACTORY

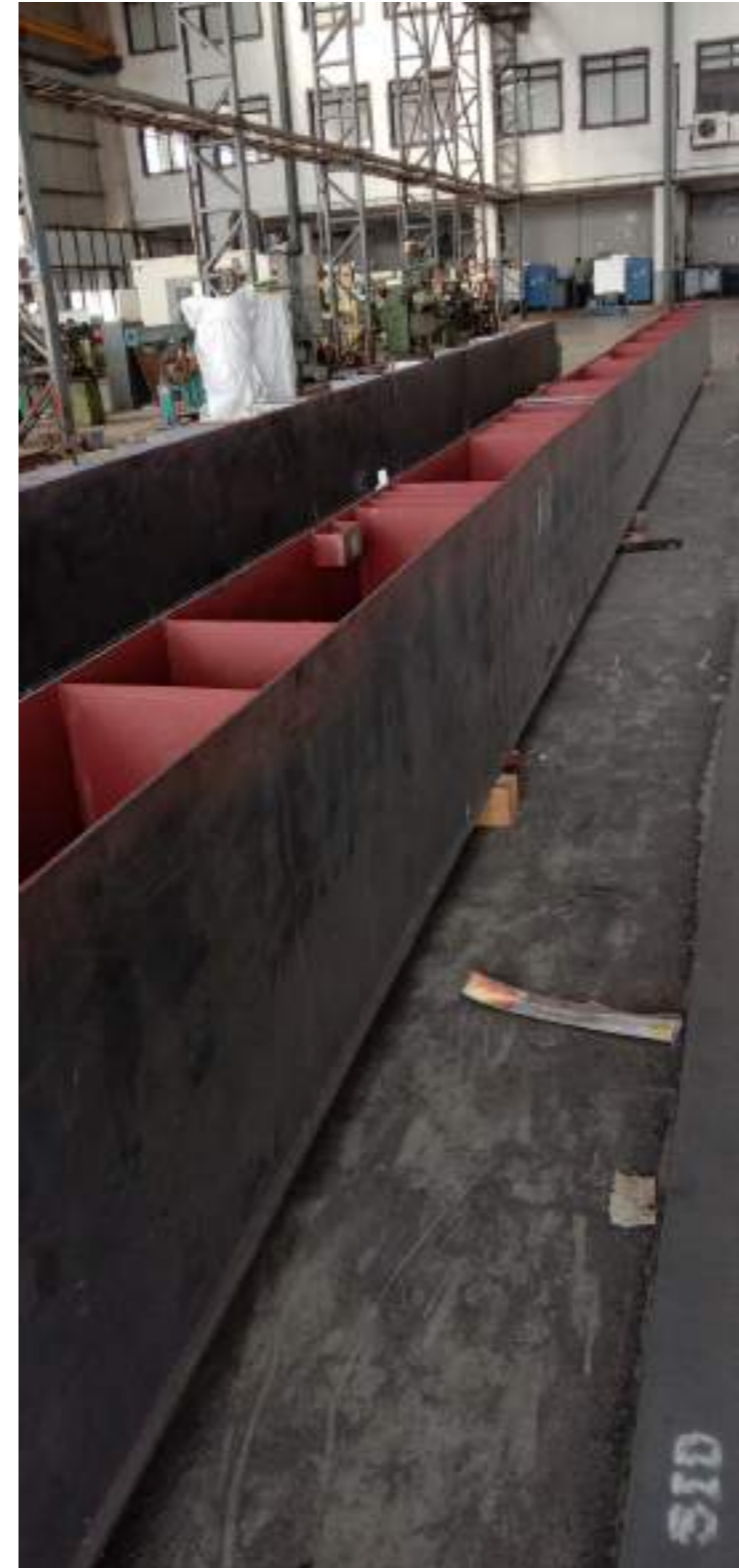


## PRODUCTION EQUIPMENTS

CNC Turning	12
VMC Machining Centre	2
Lathe Machine	7
Milling Machine	6
Gang Drilling	2
Laser marking	1
SPM Machine	2
TIG/ARC Welding Machine	2
Band Saw Machine	2
Hardness Tester	1
Roll Marking Machine	1
Radial Drilling Machine	2
Bench Grinder	2
Tool & Cutter Grinding Machine	1
Mechanical Press Machine	2
Shearing machine 3"	1
Sheet Bending Machine	1
Test Rig	2
Turn Mill Centre Machine ( 5 Axis)	3
CNC Automatic precision Lathe ( Sliding Headstock )	4

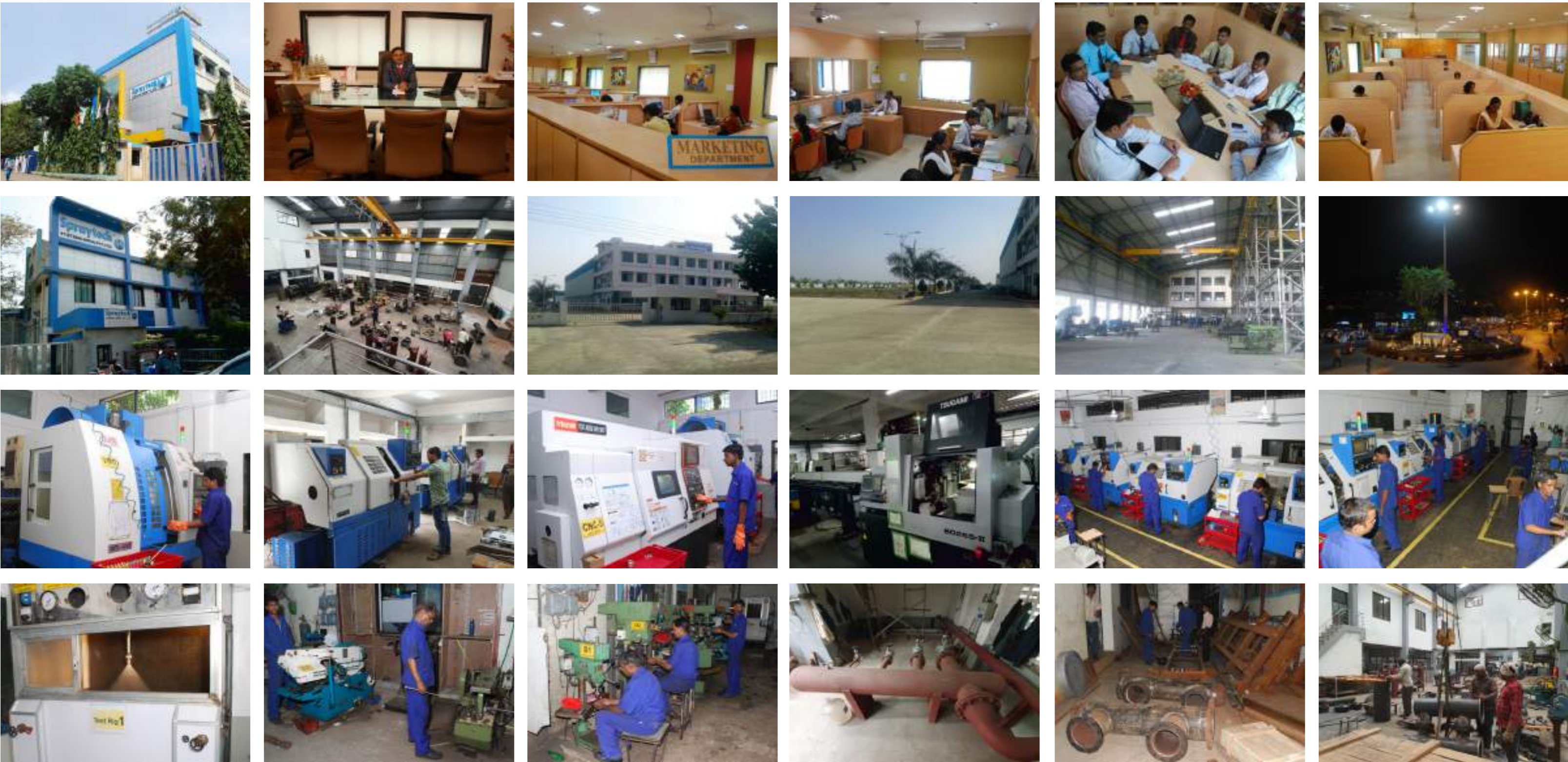


# INDAPUR FACTORY



## INDAPUR FACTORY





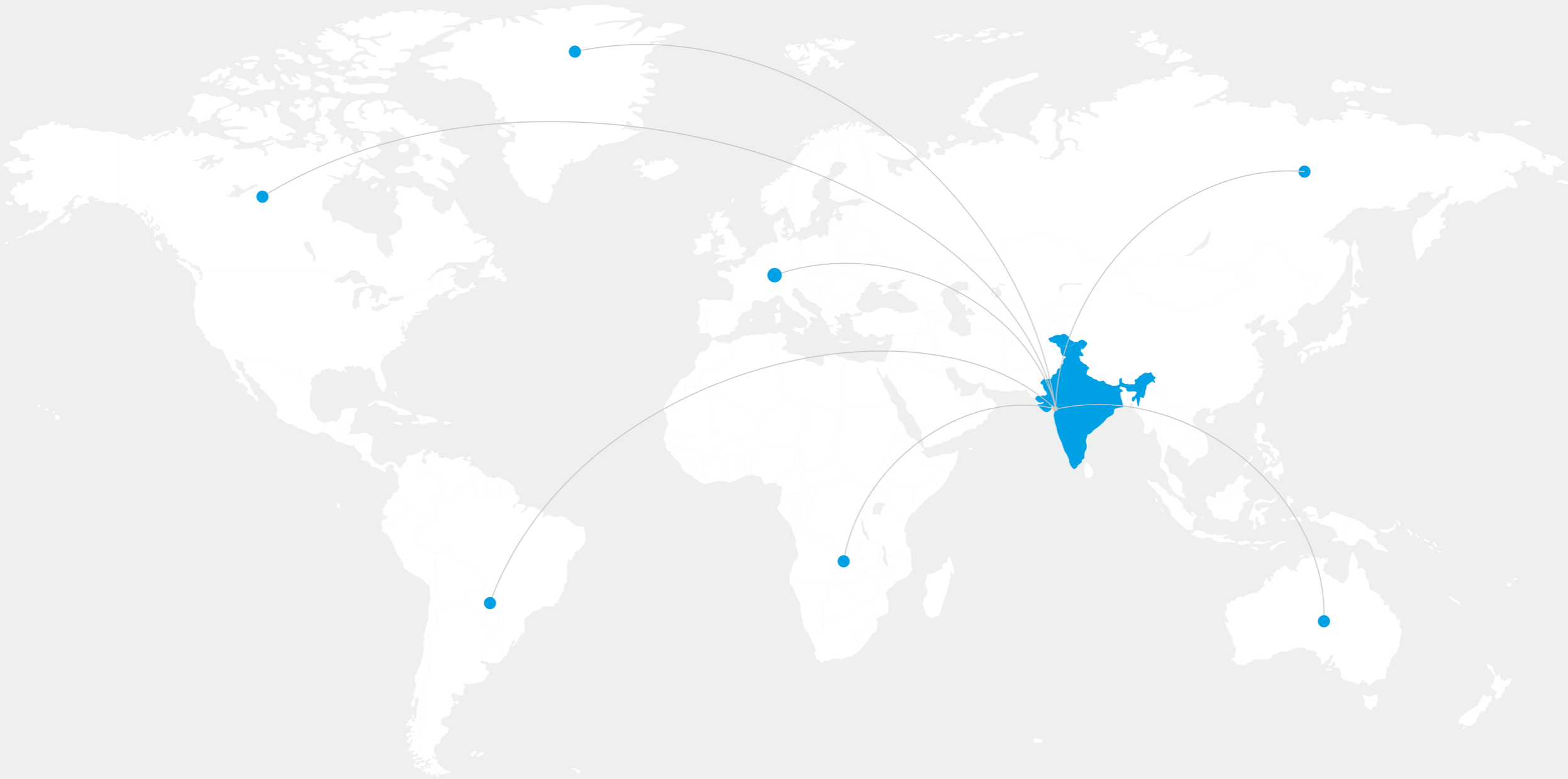


# OUR ASSETS

LOCATION	SQUARE METER	LOCATION	SQUARE METER
MUMBAI - THANE (WAGLE ESTATE)	1000	PUNE - SURVEY NO. 161	300
RABALE - PLOT NO. R-513	1000	INDAPUR - PLOT NO. A-05	20,000
RABALE - PLOT NO. R-446	1000		

## PRODUCTION MACHINERY

Lathe Machines	Vertical Milling Machines	Polish Machine	Gang Drilling Machine
Capstan Lathe Machine	Horizontal Milling Machines	Drilling Machines	Laser Marking Machines
CNC Lathe Machines	VMC Milling Machines (3-Axis)	Welding Machines	Bend Grinder
Heavy Duty Lathe Machine	CNC Turn-Mill Center (5-Axis)	Tig Welding Machines	Power Press
Band Saw Machines	CNC Turn-Mill Center (9-Axis)	Hydro Test Machines	Hand Press
Automatic Band Saw Machines	Roll Marking Machine	Punching Machine	Test Rig
Manual Band Saw Machines	Shearing Machine	SPM Machine	Tool & Cutter Grinding Machine



# OUR BRANCHES

**Regd. Office (Mumbai) :**  
Spraytech House, Plot No.: A-132, Road No. 23, Spraytech Circle,  
Wagle Indl. Estate, Thane (W) - 400 604. Mumbai Maharashtra, (India)  
Tel. : 91-022-2582 8929 / 2735 / 2736  
E-mail :- sales@spraytechautomation.com | project@spraytechautomation.com

**Branch Office (Pune) :**  
White House, Survey No. 161, Near  
Bhosale Garden Hadapsar, Pune - 411 028.  
E-mail :- sales@spraytechautomation.com

**Rabale (Navi Mumbai) :**  
Spraytech Automation India Pvt. Ltd., Plot No.: R-446, T.T.C. Industrial  
Area, MIDC Rabale, Navi Mumbai - 400 701.  
Tel. : 91 99208 30555 / 99875 84555  
E-mail :- sales@spraytechautomation.com | valves@spraytechautomation.com

**Indapur Plant (Pune) :**  
Spraytech Automation India Pvt. Ltd., Plot No.: A1/1, Indapur Five Star  
Industrial Area, Village - Loni Devkar Balpudi, Tal. - Indapur,  
Dist. - Pune - 413 132.  
Tel. : 91 99208 30555 / 99875 84555  
E-mail :- sales@spraytechautomation.com | project@spraytechautomation.com



Visit Website

